

WELCOME TO



CARTOON NETWORK™

ADVENTURE ACADEMY

LESSON 2:

*We Bare Bears Friendship
Garden Challenge.*



LESSON 2:

WE BARE BEARS FRIENDSHIP GARDEN CHALLENGE.

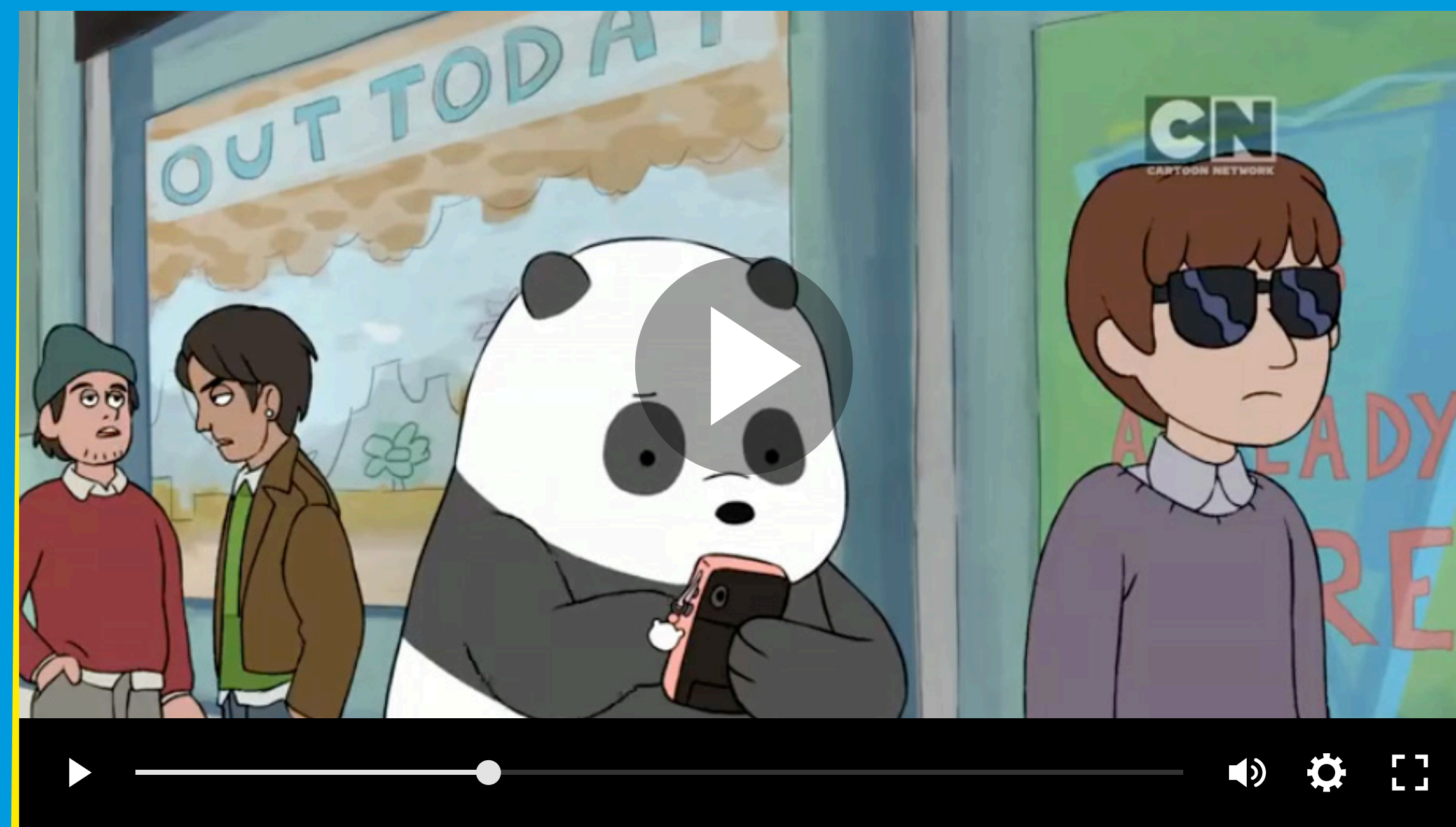
It's nearly spring and the *We Bare Bears* brothers are looking forward to getting outside into nature again.

They also want to make friends with humans, but they don't always understand them!

So, they've decided to create a *We Bare Bears* Friendship Garden - so that Grizz, Panda and Ice Bear can:

- Have fun.
- Get to know humans better.
- Make friends with humans.

Your mission: to help design the garden.



CLICK TO PLAY

LESSON 2:

WE BARE BEARS FRIENDSHIP GARDEN CHALLENGE TAKES SHAPE..

Your garden should include:

- Areas to suit the different personalities of Grizz, Panda and Ice Bear.
- Areas that humans would like too.
- Special places to enable humans and the *We Bare Bears* brothers to have fun together and get to know each other better.

You might also include:

- A sports area.
- Special play equipment which can be used by the Bears and humans at the same time!

Don't forget to use the notes and sketches you made in Lesson 1 to help inspire you.





CARTOON NETWORK™

ADVENTURE ACADEMY

That's the end of Lesson 2
BYE FOR NOW
From *We Bare Bears*!